

DC BLOCKS

2.9mm

10 MHz - 40 GHz

200 VOLTS



MODELS: 8143A & 8146A

SPECIFICATIONS:

Electrical:

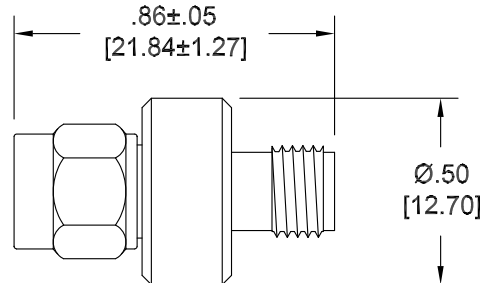
Frequency Range _____ 10 MHz – 40 GHz
VSWR _____ 1.45:1 Max.
Impedance _____ 50 Ohms
Insertion Loss _____ 0.75 dB Max.
Voltage Rating _____ 200 Volts Max.
Operating Temp. Range _____ -65°C to +125°C

Mechanical:

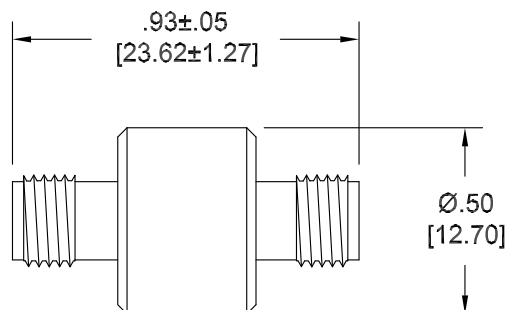
Connectors _____ Passivated Stainless Steel
(Mate both Mechanically & Electrically with
all SMA, K* & 3.5mm Series Connectors.)
Conductors _____ Gold Plated Beryllium Copper
Housings:
Inner Only Blocks _____ Passivated Stainless Steel
Inner/Outer Blocks _____ High Temperature Plastic

* K is a trademark of Wiltron Corp.

Model Number: **8143A**
2.9mm Male to Female; Inner/Outer
Weight _____ 5.5 Grams Max.



Model Number: **8146A**
2.9mm Female to Female; Inner/Outer
Weight _____ 6.2 Grams Max.



Note: Dimensions in Brackets are Expressed in Millimeters and are for Reference Only.
Design specifications are subject to change without notice.
Contact factory for technical specifications before purchasing or use.