

DC BLOCKS
2.9mm

10 MHz - 40 GHz
200 VOLTS



MODELS: 8141A & 8144A

SPECIFICATIONS:

Electrical:

Frequency Range _____ 10 MHz – 40 GHz
 VSWR _____ 1.45:1 Max.
 Impedance _____ 50 Ohms
 Insertion Loss _____ 0.75 dB Max.
 Voltage Rating _____ 200 Volts Max.
 Operating Temp. Range _____ -65°C to +125°C

Mechanical:

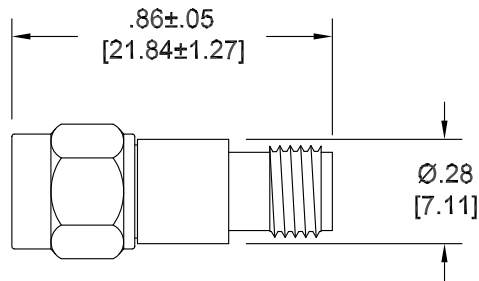
Connectors _____ Passivated Stainless Steel
(Mate both Mechanically & Electrically with all SMA, K* & 3.5mm Series Connectors.)
 Conductors _____ Gold Plated Beryllium Copper
 Housings:
 Inner Only Blocks _____ Passivated Stainless Steel
 Inner/Outer Blocks _____ High Temperature Plastic

Typical low Frequency Performance

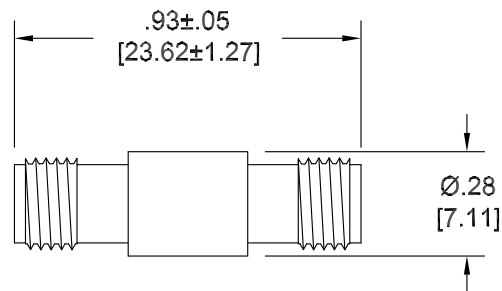
Frequency Range	Insertion Loss	VSWR
1 kHz	24dB	—
16 kHz	3dB	6:1
50 kHz	0.5dB	2:1
110 kHz	0.1dB	1.35:1

* K is a trademark of Wiltron Corp.

Model Number: **8141A**
 2.9mm Male to Female; Inner Only
 Weight _____ 5.3 Grams Max.



Model Number: **8144A**
 2.9mm Female to Female; Inner Only
 Weight _____ 7.2 Grams Max.



Note: Dimensions in Brackets are Expressed in Millimeters and are for Reference Only.
 Design specifications are subject to change without notice.
 Contact factory for technical specifications before purchasing or use.